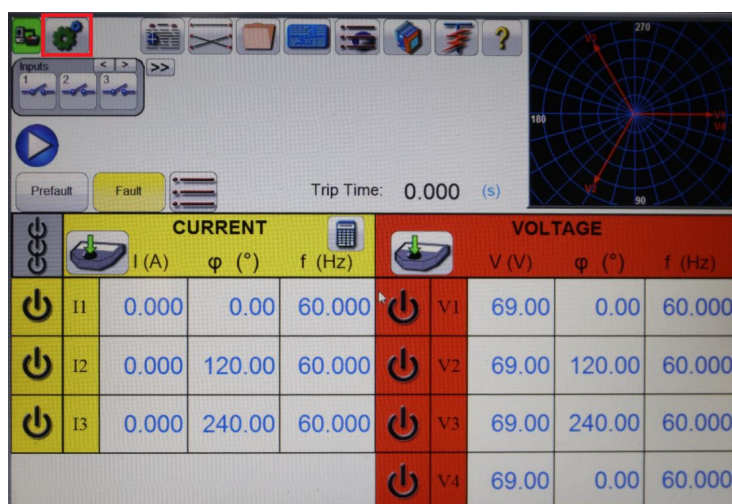


## How to check and know the version of Software and Firmware on your SMRT Display unit or using a STVI:

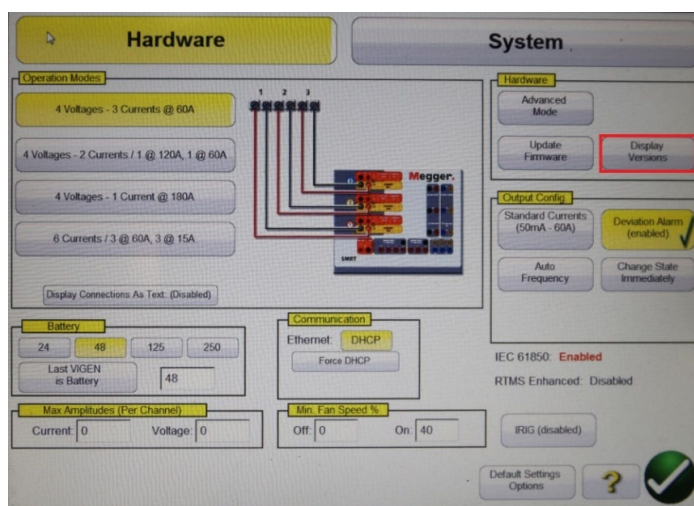
**⚠ Note:** This document explains how to update software and/or firmware on a SMRT unit. When a reference is made to firmware versions and software versions in this document it must be considered as examples only and not seen as the latest available firmware/software. For the latest software and firmware, please consult the latest product update document or visit the Megger website for latest release versions and information on the updates/fixes.

1. With the RTMS software open on the SMRT Onboard Display or STVI on the Home Screen, select the “System Configuration” button as per Figure 1.



**Figure 1.**

2. In the “System Configuration” screen, select “Display Versions” as per Figure 2.



**Figure 2.**

3. In “Display Versions”, you will see the following information screen as per Figure 3.

Version Info

Model: SMRT46P

1. Serial Number: 202002070006

IP Address: 169.254.73.200

IEC-61850 Enabled: 2

RTMS Enhanced Enabled: 1

Bluetooth Installed: 1

Binary I/O Installed: 1

System Board Type: 5.2.A

System Board Serial Number:

PowerDB Version: 11.2.10.130

2. PowerDB Build Date: May 18 2022, 16:24:42

Driver DLL Version: D100.53.18

3. DLL Build Date: May 18 2022, 10:21:12

Form Modified Date: 8/4/2021

Translation Table Version: 79.5

Form Version: 2

Expected Form Version: 2

Generator Number	Type	Serial Number	4. Firmware Version	Bootloader Version	Hardware Version	PFC Type	IP Address
1	VI	202003080006	6.26100	1.052	GenRev:4.00	0131	169.254.73.200
2	VI	202002080026	6.26100	1.052	GenRev:4.00	0131	169.254.200.179
3	VI	202002080027	6.26100	1.052	GenRev:4.00	1000	169.254.194.231
4	V		6.26100		GenRev:4.00	0000	

Commands

**Figure 3.**

4. Description of the highlighted red blocks in Figure 3.
  - a. Serial number of the SMRT that is connected.
  - b. This is the PowerDB version and PowerDB build date\*.
  - c. This is the RTMS Driver version and build date\*\*.
  - d. Current Firmware version in the SMRT that is connected.




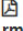
Notes:

\* The PowerDB version number is associated with the PowerDB Software and will be the same for all Megger Products.

\*\* The RTMS Driver version number is referring to the RTMS Software only and will only change when changes are made to RTMS.

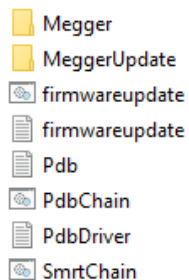
### **Instructions for RTMS Onboard Software update downloaded from the Megger website:**

1. Go to [www.megger.com](http://www.megger.com)
2. **Log In.** (If you have not registered on the Megger website you will have to do so)
3. In the search window, enter RTMS or go to “Products” -> “Relay and Protection Testing” -> “Relay software” and select RTMS.
4. On the RTMS page that you selected go to the “Software” tab. Under the “RTMS” tab there is four zipped files, one containing PowerDB and the latest RTMS Software for PC, one containing PowerDB and the latest RTMS Software for Onboard install (for display models and STVI) , one containing SMRT Firmware through onboard and one containing SMRT Firmware through PC as per Figure 4.

<b>install_powerdb_11.2.10_27SEP21</b> Released: September, 2021 Note: The downloaded file will be named "Install_powerdb_XXX.zip"	
 <b>install_powerdb_11-2-10_DU_27SEP21_Bundle.zip</b>	<a href="#">Download</a>
925.3 MB   25/03/22	
<b>Onboard_Install_11.2.10_27SEP21</b> Released: September, 2021 Note: The downloaded file will be named "Onboard_powerdb_XXX.zip"	
 <b>Onboard_Install_11-2-10_DRIVER_UPDATE_27SEP21SMRT.zip</b>	<a href="#">Download</a>
487.3 MB   01/03/22	
<b>RTMS Local Firmware Update Instructions</b>  <b>Instructions-on-how-to-update-RTMS-and-Firmware-on-your-SMRT-Display-unit-or-STVI_21Sept2020.pdf</b>	
977.9 KB   10/12/21	
<b>RTMS Remote Firmware Update Instructions</b>  <b>Instructions-on-how-to-update-RTMS-and-Firmware-on-your-PC-and-SMRT-unit_21Sept2020.pdf</b>	
1.7 MB   10/12/21	

**Figure 4.**

5. Save the downloaded Zip file containing the “Onboard Install” on your local hard-drive for later installation. Unzip the folder to the root directory of a Thumb drive as per the example in Figure 5.



**Figure 5.**

6. Insert the thumb drive into one of the USB slots on the SMRT display unit or STVI.
7. With the RTMS Software open on the Home Screen, select the “System Configuration” button as per Figure 6.

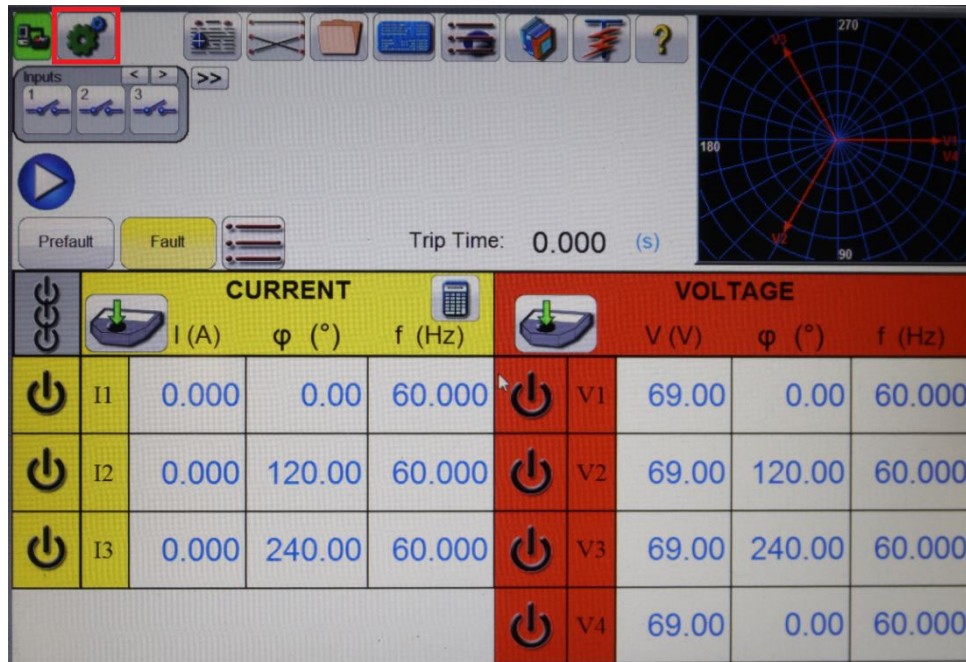


Figure 6.

- In the "System Configuration" screen, select "Update Firmware" as per Figure 7.

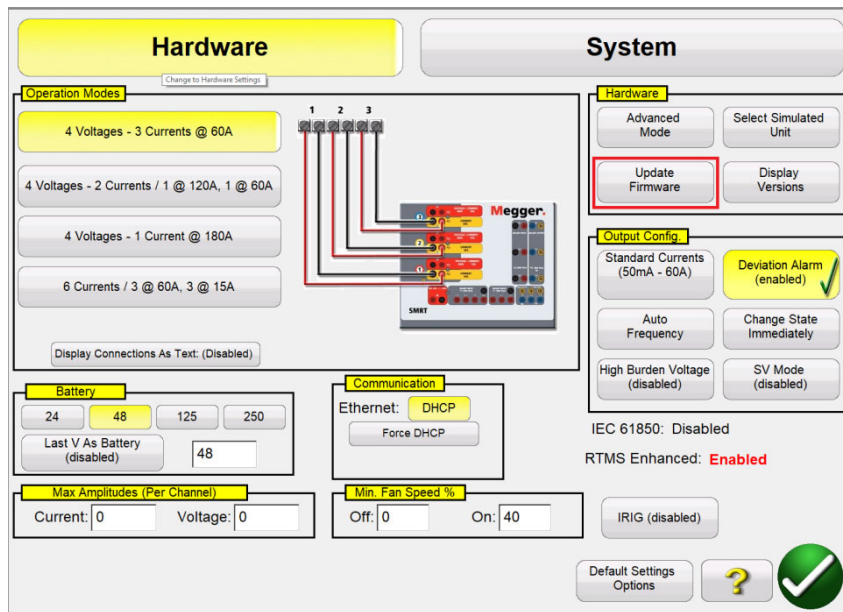
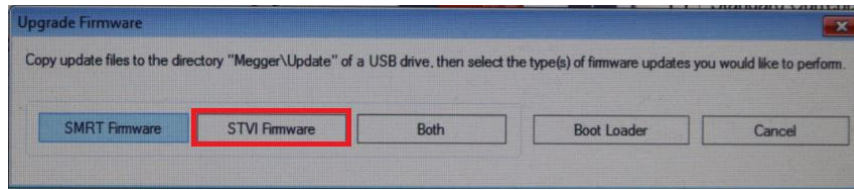


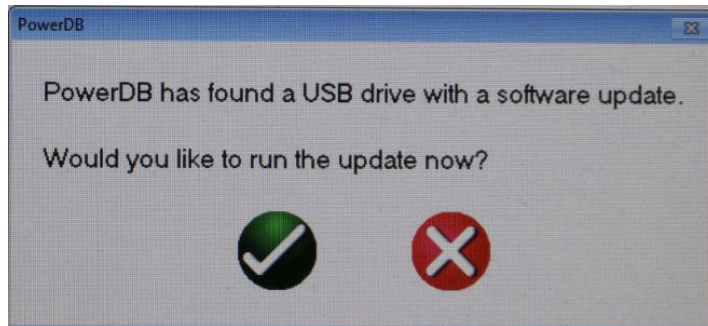
Figure 7.

- After selecting "Update Firmware", the user should see the following screen as per Figure 8. Click on "STVI Firmware"



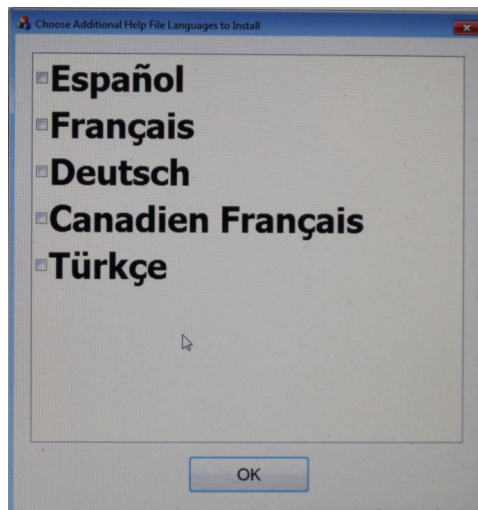
**Figure 8.**

10. The following message should pop up as per as per Figure 9.



**Figure 9.**

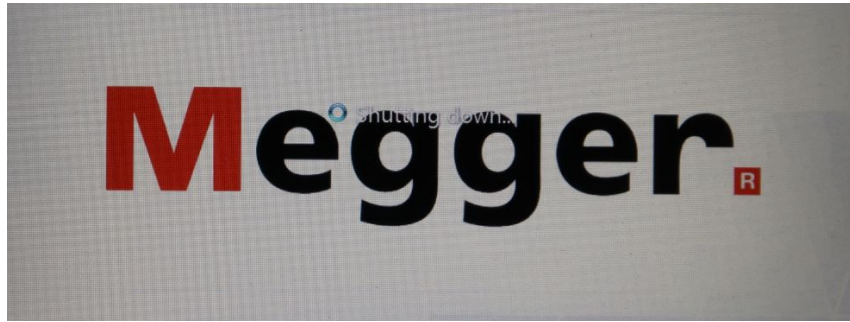
11. Select the green check mark and the installation process should start.
12. After a few seconds, a pop-up window with Language selection will appear, select the additional languages that you want to install, if any, and select "OK" as per Figure 10.



**Figure 10.**

13. After selecting "OK", the installation process will continue and after some time the system will start the shutdown process, go ahead and remove the USB Thumb drive containing the Upgrade as per Figure 11.



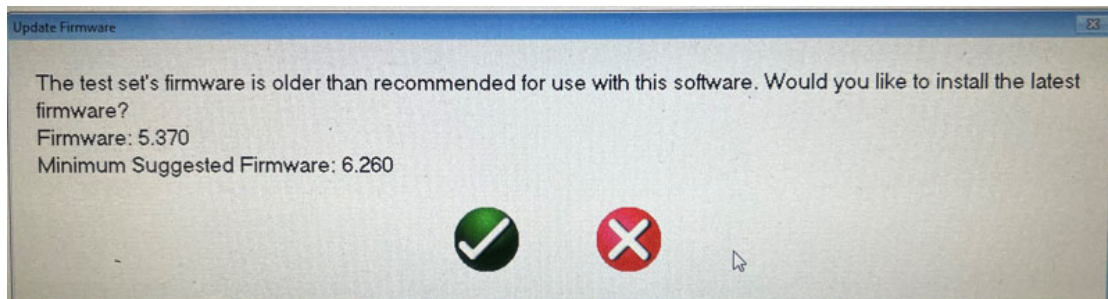


**Figure 11.**

14. The system will go through its normal start up process and once done the User can confirm the software version of the connected SMRT refer to “How to check and know the version of Software and Firmware on your SMRT”.

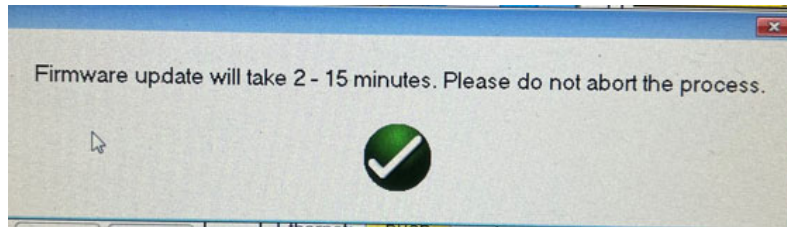
**Instructions for firmware update downloaded from the Onboard Software Install:**

15. With the latest RTMS Software installed, the next time that the user connects to a SMRT with older firmware an automatic message will appear advising the user of a new recommended firmware and whether the user wants to install the firmware or not as per Figure 12.



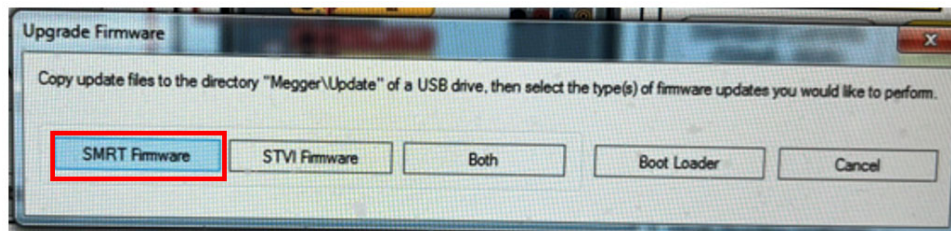
**Figure 12.**

16. User can either select green tick if it is desired to update the firmware right away or he/she can select red tick and update the firmware sometime later. Red cross selection will connect with the latest onboard software but will have the older firmware.
17. If green tick is clicked, onboard unit will find the latest firmware from its hard drive and start the update process. Megger provides latest firmware inside the zipped file that was used to update the software as mentioned in above steps. User will see a message as shown in Figure 13. indicating the time to update the firmware. Please select green tick to proceed.



**Figure 13.**

18. If red cross is clicked in Step-16, RTMS will be launched. If user wishes to update the firmware in future, they may follow steps 7 and 8 to start with the procedure.
19. After selecting "Update Firmware", the user should see the following screen as per Figure 14. Click on "SMRT Firmware"



**Figure 14.**

20. Same message as shown in Figure 13 will appear and user can proceed with clicking green tick.
21. Firmware update process will start. Please wait until the whole process is finished. At the end, user will be notified about when to reboot the device. Test set must not be rebooted until the LEDs on Binary Outputs start flashing and clicking sound is heard.

**Special Note:** If the user wants to update the firmware for IEC 61850 9-2 LE Sampled Values application, we recommend using PC for that purpose.