

How to check and know the version of Software and Firmware on your SMRT:

- ⚠ **Note:** This document explains the how to when updating Software and/or Firmware on a SMRT unit and the reference to Firmware versions and Software versions should be considered as examples only and not seen as the latest available Firmware/Software. For latest Software and Firmware please consult the Product Update document for latest release versions and information on the updates/fixes.

1. With the RTMS Software open on the Home Screen, select the “System Configuration” button as per Figure 1.

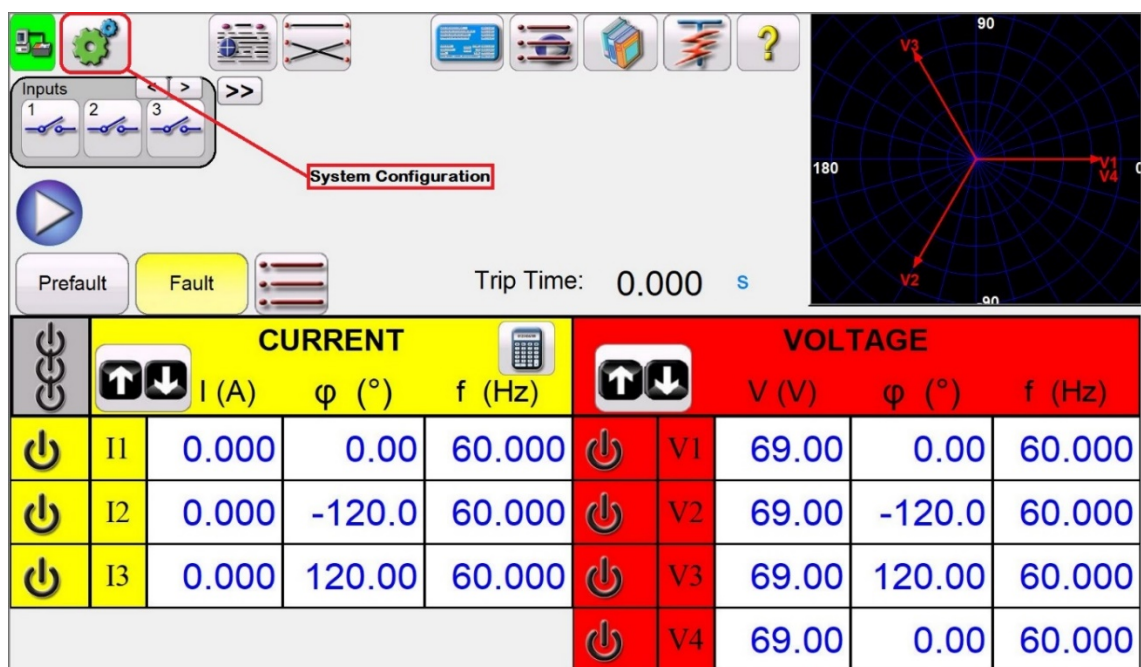


Figure 1.

2. In the “System Configuration” screen, select “Display Versions” as per Figure 2.

Change to Hardware Settings

Hardware

System

Operation Modes

4 Voltages - 3 Currents @ 60A

4 Voltages - 2 Currents / 1 @ 120A, 1 @ 60A

4 Voltages - 1 Current @ 180A

6 Currents / 3 @ 60A, 3 @ 15A

Display Connections As Text: (Disabled)

Battery

24

48

125

250

Last VIGEN is Battery

48

Max Amplitudes (Per Channel)

Current: 0

Voltage: 0

Communication

Ethernet: DHCP

Force DHCP

Min. Fan Speed %

Off: 0

On: 40

Output Config

Standard Currents (50mA - 60A)

Deviation Alarm (enabled)

Auto Frequency

Change State Immediately

IEC 61850: Disabled

RTMS Enhanced: Disabled

IRIG (disabled)

Default Settings Options

?

✓

Figure 2.

- In "Display Versions", you will see the following information screen as per Figure 3.

Version Info

1.

Model: SMRT46P

Serial Number: 201604070002

IP Address: 10.5.32.134

IEC-61850 Enabled: 0

RTMS Enhanced Enabled: 0

Bluetooth Installed: 1

Binary I/O Installed: 1

System Board Type: 5.0,A

System Board Serial Number:

PowerDB Version: 11.2.0.0

PowerDB Build Date: Dec 3 2018, 16:58:46

Driver DLL Version: D100.37

DLL Build Date: Nov 19 2019, 14:51:26

Form Modified Date: 11/13/2019

Translation Table Version: 59.0

Form Version: 2

Expected Form Version: 2

2.

3.

4.

4.

Generator Number	Type	Serial Number	Firmware Version	Bootloader Version	Hardware Version	PFC Type	IP Address
1	VI	201604080017	5.370	1.052	GenRev:2.65	0111	10.5.32.134
2	VI	201604080018	5.370	1.052	GenRev:2.65	0111	10.5.32.133
3	VI	201604080019	5.370	1.052	GenRev:2.65	0000	10.5.31.167
4	V	1416 SM00074	5.370		GenRev:2.65	0000	

Commands

Figure 3.

4. Description of the highlighted red blocks in Figure 3.
 - a. Serial number of the SMRT that is connected.
 - b. This is the PowerDB version and PowerDB build date*.
 - c. This is the RTMS Driver version and build date**.
 - d. Current Firmware version in the SMRT that is connected.

Notes:

* The PowerDB version number is associated with the PowerDB Software and will be the same for all Megger Products.

** The RTMS Driver version number is referring to the RTMS Software only and will only change when changes is made to RTMS.

Instructions for RTMS Software update downloaded from the Megger website:

1. Go to www.megger.com
2. **Log In.** (If you have not registered on the Megger website you will have to do so)
3. In the search window enter the model of SMRT that you have or go to “Products”, “Relay and Protection Testing”, “Multi-phase relay testing if you have a multi-phase SMRT”, “Relay Software” or “Single phase relay testing if you have a SMRT1” and select the model of SMRT that you have.
4. On the SMRT page that you selected go to the “Software” tab.
5. Under the “SMRT” tab two Zip files, one containing PowerDB and the latest RTMS Software and one containing SMRT Firmware, and can be downloaded as per Figure 4 & 17.

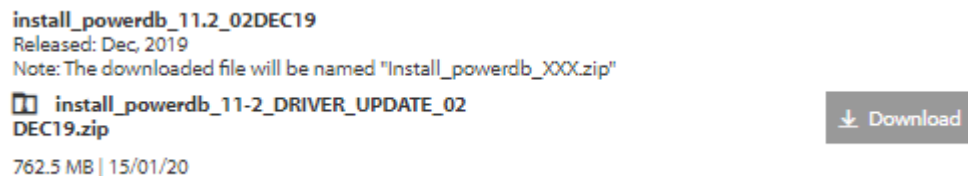


Figure 4.

Note:

*** With the latest RTMS Software installed on your PC, the next time that the user connects to a SMRT with older firmware an automatic message will appear advising the user of a new recommended firmware and whether the user wants to install the firmware or not as per Figure 5.

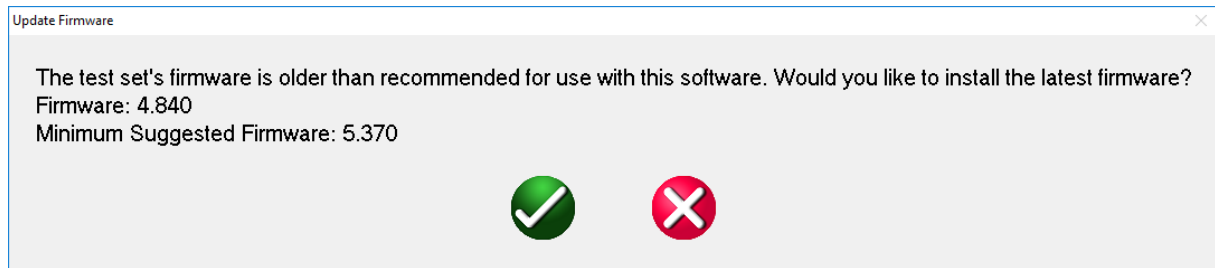


Figure 5.

6. Save the downloaded Zip file containing the PowerDB and RTMS Software on your local hard-drive for later installation.
7. Once the Zip file containing the PowerDB and RTMS Software is saved on your local drive, unzip the folder and the following example files as per Figure 6, should be visible.

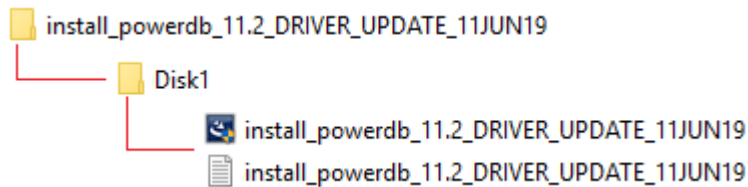


Figure 6.

8. Double click on the “install_powerdb” icon or right click on the “install_powerdb” icon and hit “run” to install the software.
9. Hit next as per Figure 7.

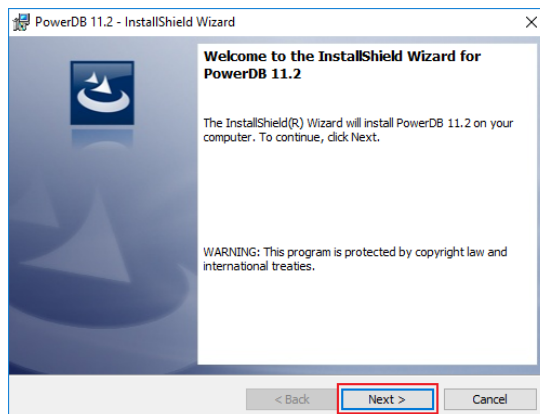


Figure 7.

10. Accept the “terms in the license agreement” as per Figure 8.

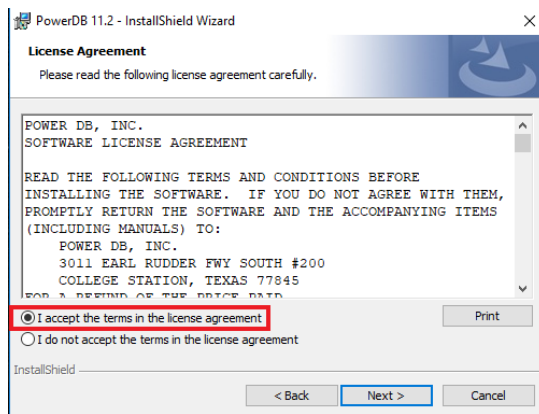


Figure 8.

11. Hit “next” for the “Destination Folder” as per Figure 9.

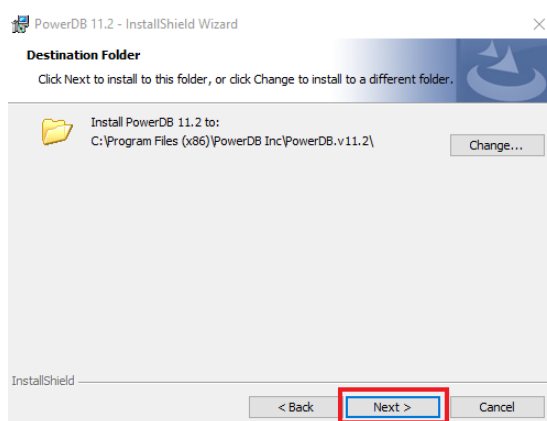


Figure 9.

12. Select the PowerDB software “Defaults” for “Language”, “Units”, “Frequency”, “Use PF or DF”, “Standard” and hit “Next” as per Figure 10.

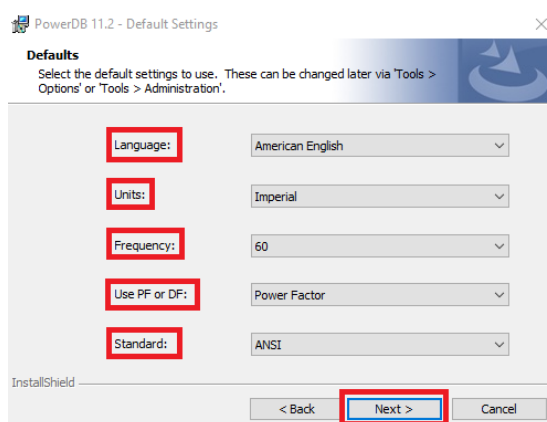


Figure 10.

13. Select the version of PowerDB to be installed, either “Lite (free with purchase of any SMRT)”, “Advanced (purchasable option)” and “Pro + PowerDB Reader (purchasable option)” as per Figure 11.

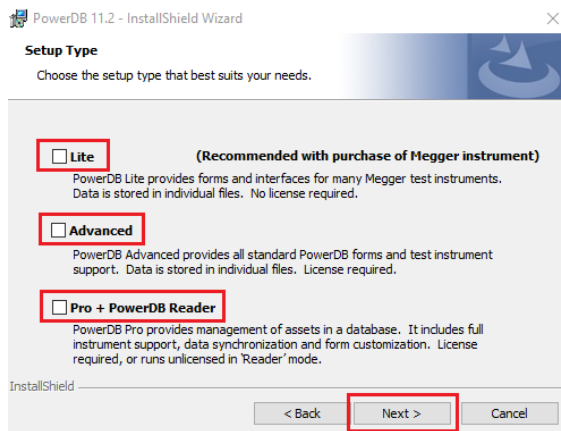


Figure 11.

14. Click “Install” on the “Ready to Install the Program” window as per Figure 12.

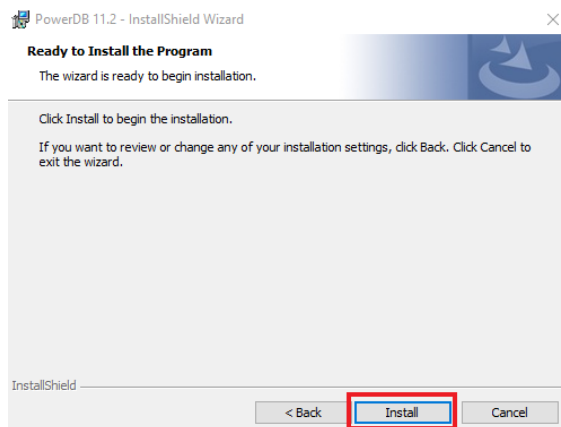


Figure 12.

15. Click “Finish” when the “InstallShield Wizard Complete” window appears as per Figure 13.

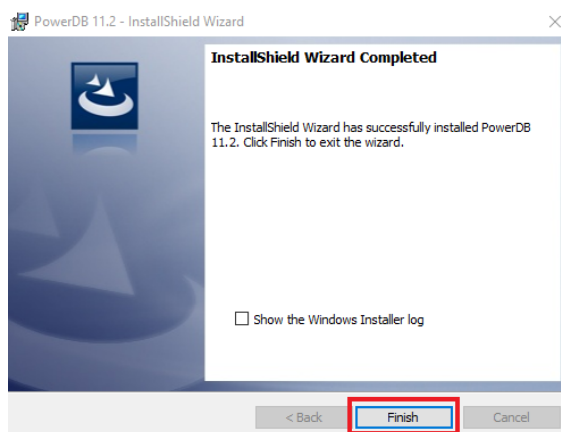


Figure 13.

16. A window with “Additional Software” options will appear and unless the User is using the Megger equipment listed, the User can select “Cancel” as per Figure 14.

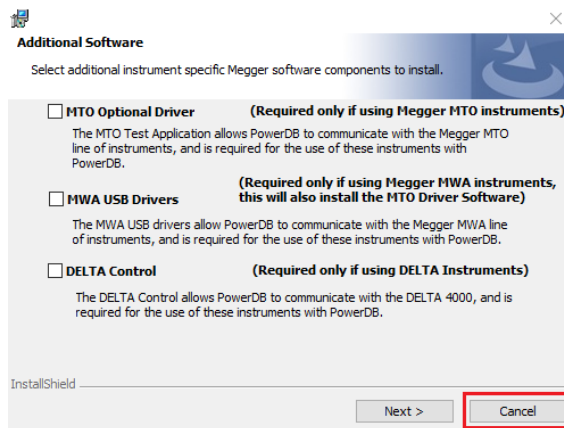


Figure 14.

17. Select “Yes” for the option not to install additional drivers as per Figure 15.

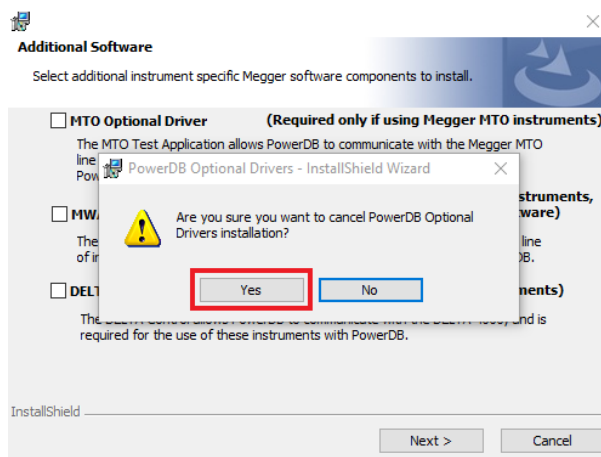


Figure 15.

18. Select “Finish” on the “InstallShield Wizard Completed” window as per Figure 16.

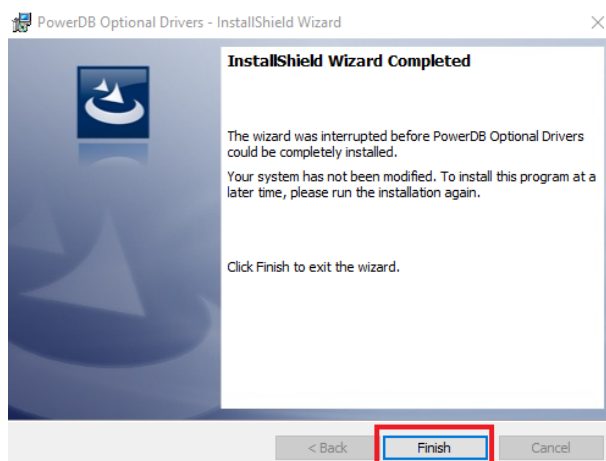


Figure 16.

19. To confirm the PowerDB and RTMS versions refer back to “How to check and know the version of Software and Firmware on your SMRT”

Instructions for SMRT Firmware update downloaded from the Megger website:

20. Go to www.megger.com
21. **Log In.** (If you have not registered on the Megger website you will have to do so)
22. In the search window enter the model of SMRT that you have or go to “Products”, “Relay and Protection Testing”, “Multi-phase relay testing if you have a multi-phase SMRT”, “Relay Software” or “Single phase relay testing if you have a SMRT1” and select the model of SMRT that you have.
23. On the SMRT page that you selected go to the “Software” tab.
24. Under the “SMRT” tab two Zip files, one containing PowerDB and the latest RTMS Software and one containing SMRT Firmware, and can be downloaded as per Figure 4 & 17.



Figure 17.

25. Save the downloaded Zip file containing the latest firmware to your local hard-drive for later installation.
26. Once the Zip file containing the firmware update is saved on your local drive, unzip the folder to a location on your local hard drive for later installation as per Figure 18.

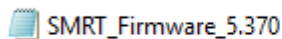


Figure 18.

27. With the RTMS Software open on the Home Screen, select the “System Configuration” button as per Figure 19.

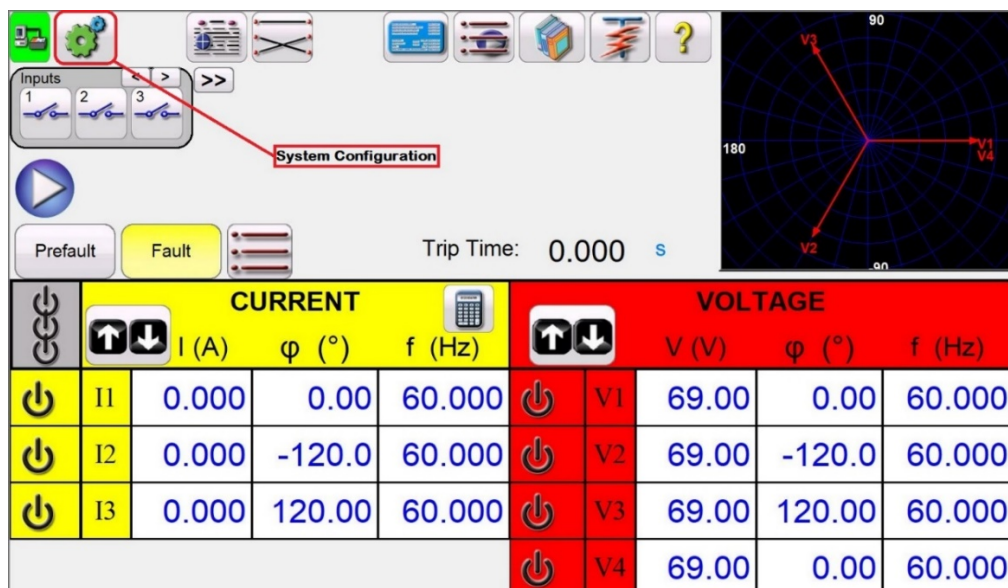


Figure 19.

28. In the “System Configuration” screen, select “Update Firmware” as per Figure 20.

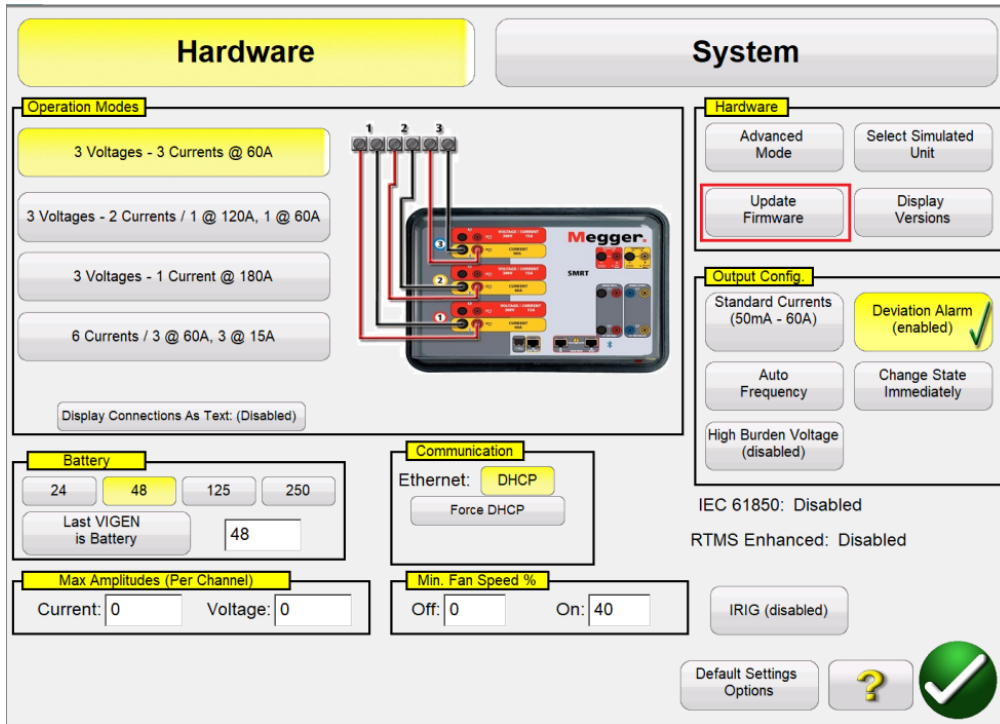


Figure 20.

29. After selecting “Update Firmware” the user should see the following screen as per Figure 21, locate where the downloaded Firmware was saved and open the file containing the Firmware.

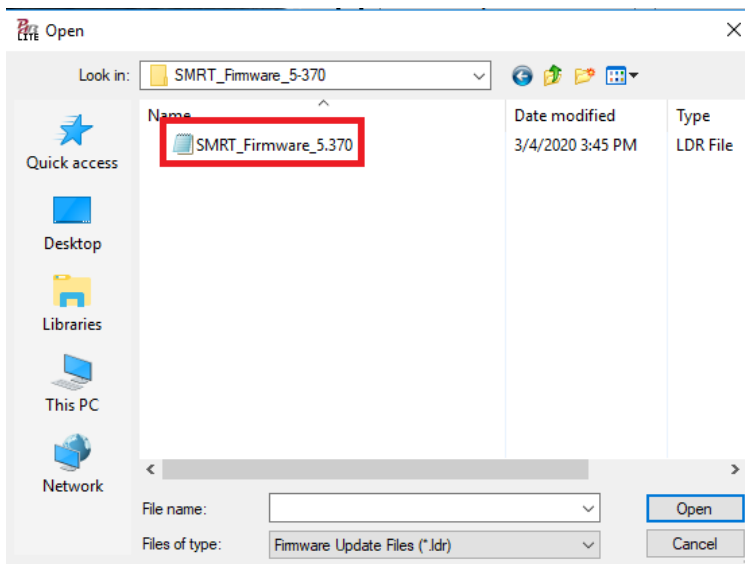


Figure 21.

30. The Firmware will be installed on the connected SMRT and on completion of the installation; the user should see the following message as per Figure 22.

Please Reboot Instrument when clicking..

Figure 22.

31. Power cycle the SMRT and select the connected SMRT once the Serial number of the unit appears in the “connection” window as per Figure 23.

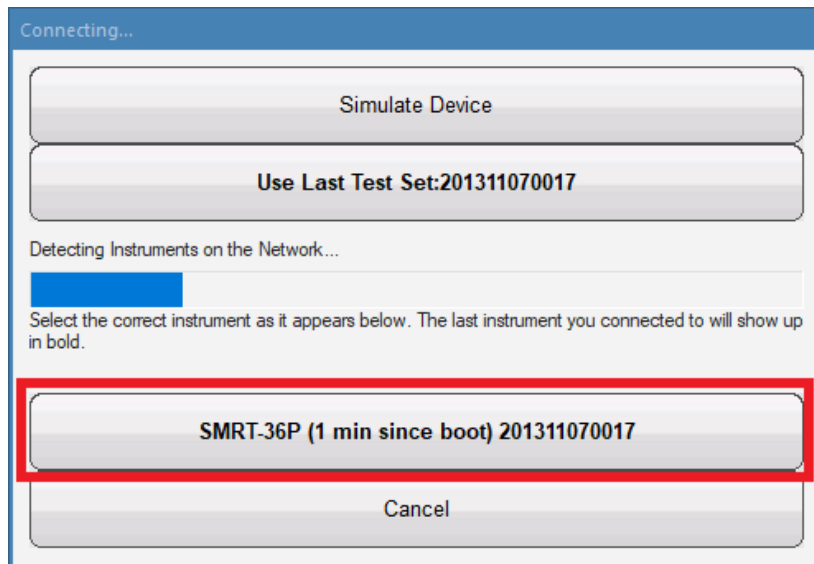


Figure 23.

32. To confirm the Firmware version of the connected SMRT refer back to “How to check and know the version of Software and Firmware on your SMRT”.