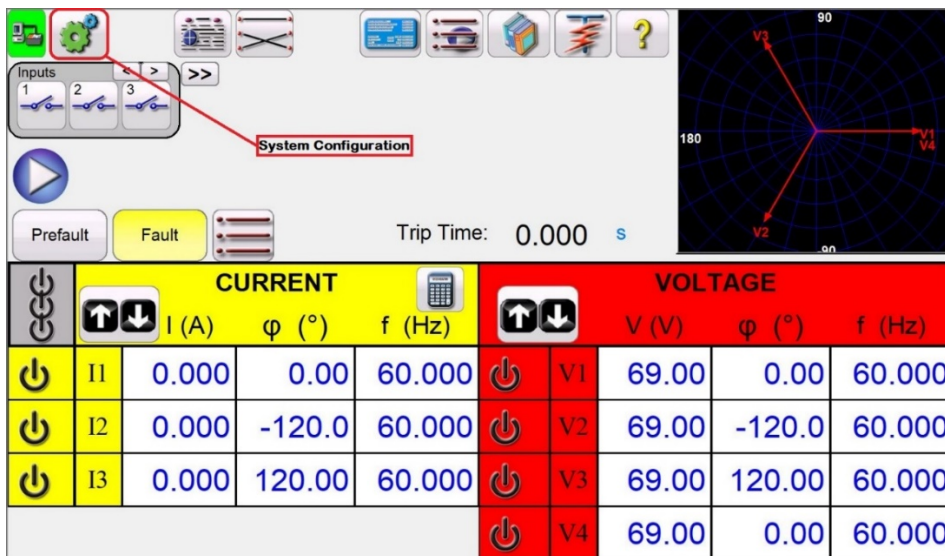


## How to check and know the version of Software and Firmware on your FREJA using FREJA Remote Software on a PC:

- ⚠ **Note:** This document explains the how to when updating Software and/or Firmware on a FREJA unit and the reference to Firmware versions and Software versions should be considered as examples only and not seen as the latest available Firmware/Software. For latest Software and Firmware, please consult the Product Update document for latest release versions and information on the updates/fixes.

1. With the FREJA Remote Software open and on the Home Screen, select the “System Configuration” button as per Figure 1.



**Figure 1.**

2. In the “System Configuration” screen, select “Display Versions” as per Figure 2.

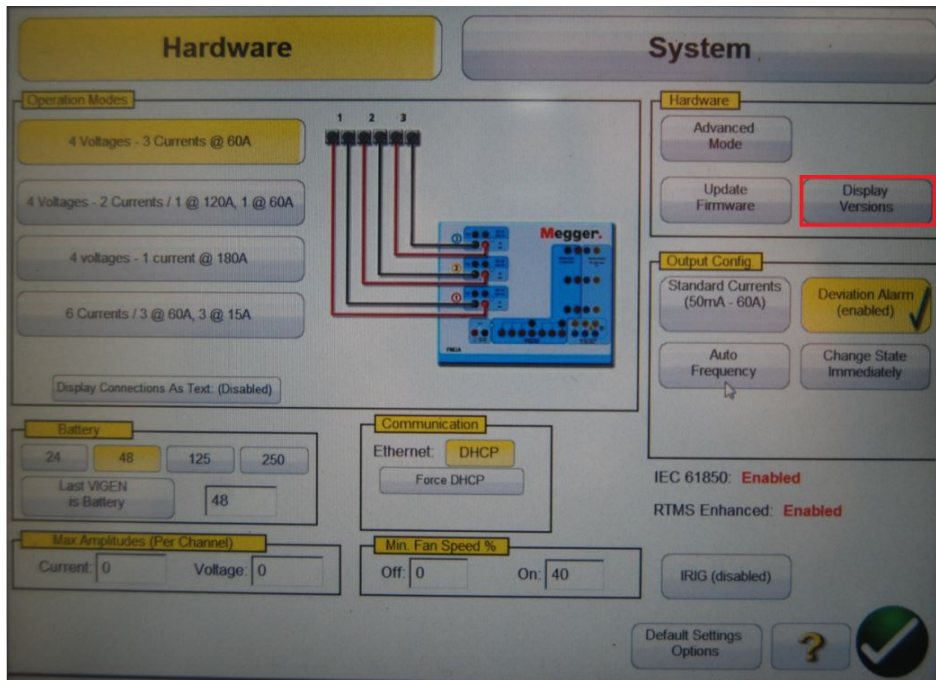


Figure 2.

3. In "Display Versions", you will see the following information screen as per Figure 3.

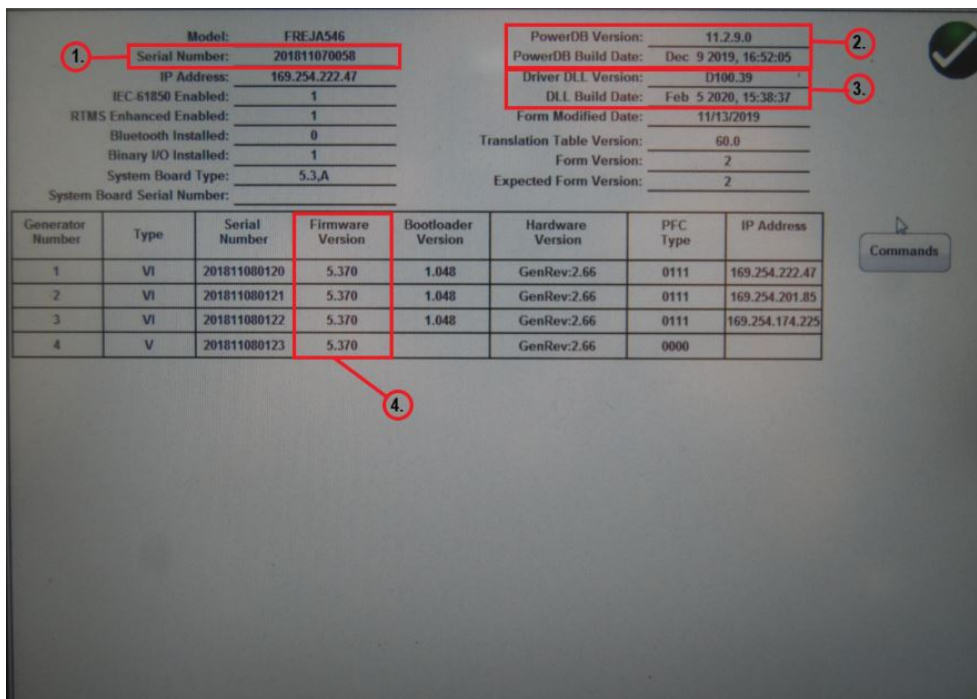


Figure 3.

4. Description of the highlighted red blocks in Figure 3.

- a. Serial number of the FREJA that is connected.
- b. This is the PowerDB version and PowerDB build date\*.
- c. This is the FREJA Remote Driver version and build date\*\*.
- d. Current Firmware version in the FREJA that is connected.

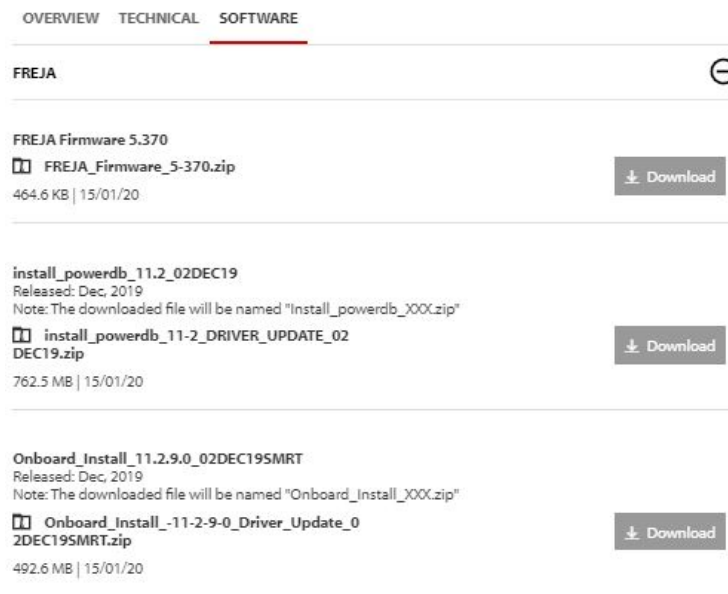
Notes:

\* The PowerDB version number is associated with the PowerDB Software and will be the same for all Megger Products.

\*\* The FREJA Remote Driver version number is referring to the FREJA Remote Software only and will only change when changes is made to FREJA Remote.

**Instructions for FREJA Remote Software update downloaded from the Megger website:**

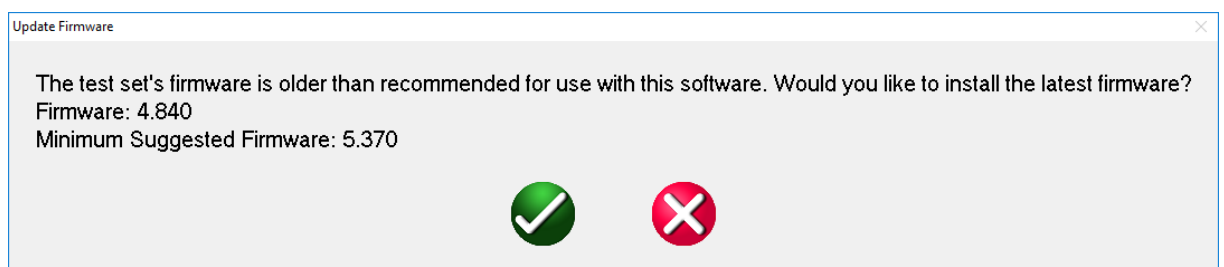
1. Go to [www.megger.com](http://www.megger.com)
2. **Log In.** (If you have not registered on the Megger website you will have to do so)
3. In the search window, enter the model of FREJA that you have or go to “Products”, “Relay and Protection Testing”, “Multi-phase relay testing”, “Relay Software” and select the model of FREJA that you have.
4. On the FREJA page that you selected go to the “Software” tab.
5. Under the “FREJA” tab there is three Zip files, one containing PowerDB and the latest FREJA Remote Software, one containing the Onboard install and one containing FREJA Firmware, and can be downloaded as per Figure 4 & 17.



**Figure 4.**

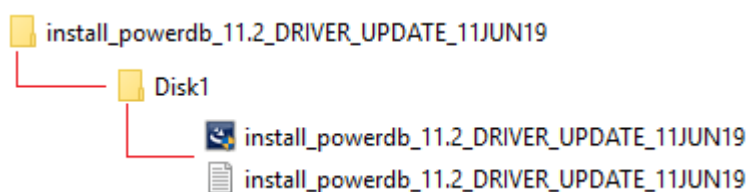
Note:

\*\*\* With the latest FREJA Remote Software installed on your PC, the next time that the user connects to a FREJA with older firmware an automatic message will appear advising the user of a new recommended firmware and whether the user wants to install the firmware or not as per Figure 5.



**Figure 5.**

6. Save the downloaded Zip file containing the PowerDB and FREJA Remote Software on your local hard-drive for later installation.
7. Once the Zip file containing the PowerDB and FREJA Remote Software is saved on your local drive, unzip the folder and the following example files as per Figure 6, should be visible.



**Figure 6.**

8. Double click on the “install\_powerdb” icon or right click on the “install\_powerdb” icon and hit “run” to install the software.
9. Hit next as per Figure 7.

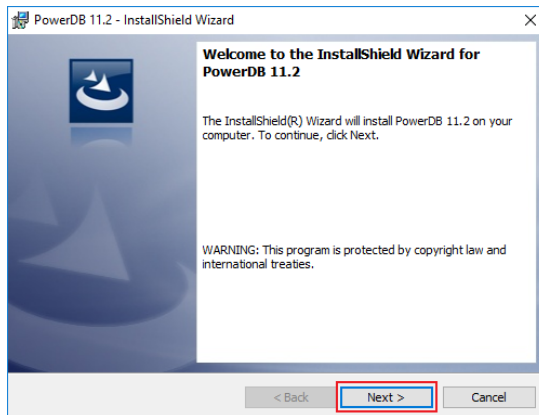


Figure 7.

10. Accept the “terms in the license agreement” as per Figure 8.

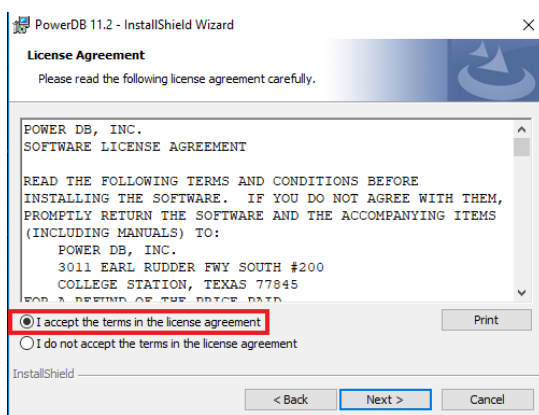


Figure 8.

11. Hit “next” for the “Destination Folder” as per Figure 9.

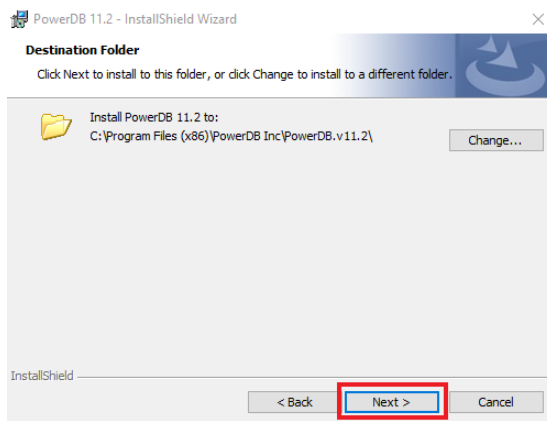


Figure 9.

12. Select the PowerDB software “Defaults” for “Language”, “Units”, “Frequency”, “Use PF or DF”, “Standard” and hit “Next” as per Figure 10.

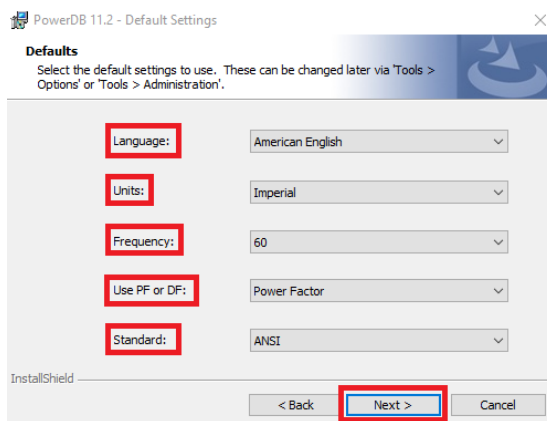


Figure 10.

13. Select the version of PowerDB to be installed, either “Lite (free with purchase of any FREJA)”, “Advanced (purchasable option)” and “Pro + PowerDB Reader (purchasable option)” as per Figure 11.

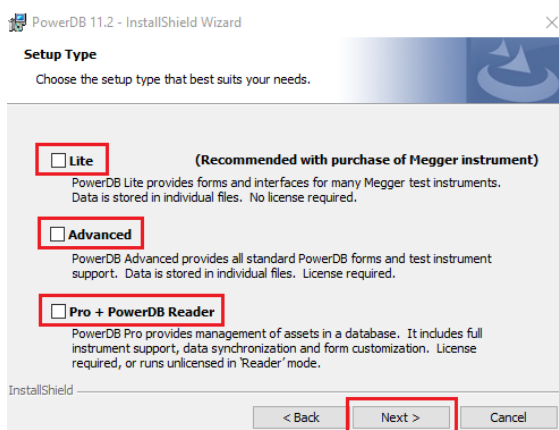


Figure 11.

14. Click “Install” on the “Ready to Install the Program” window as per Figure 12.

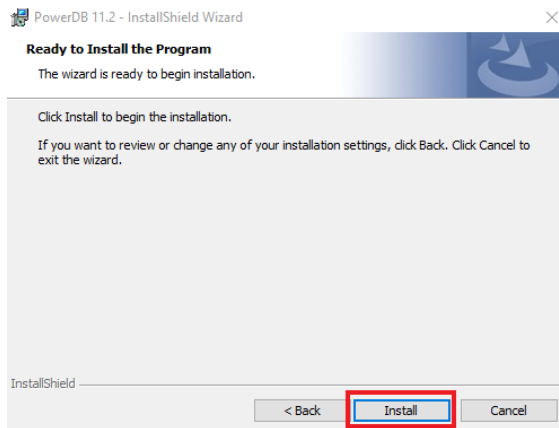


Figure 12.

15. Click “Finish” when the “InstallShield Wizard Complete” window appears as per Figure 13.

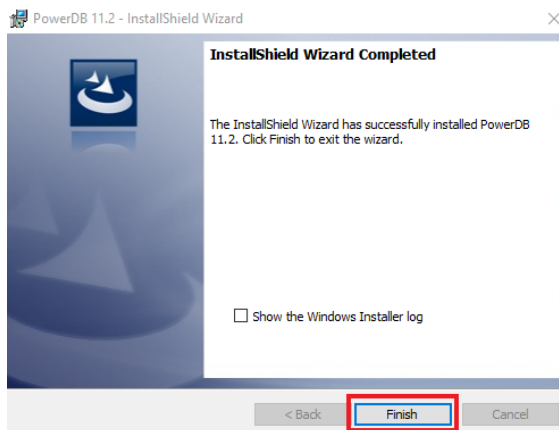


Figure 13.

16. A window with “Additional Software” options will appear and unless the User is using the Megger equipment listed, the User can select “Cancel” as per Figure 14.

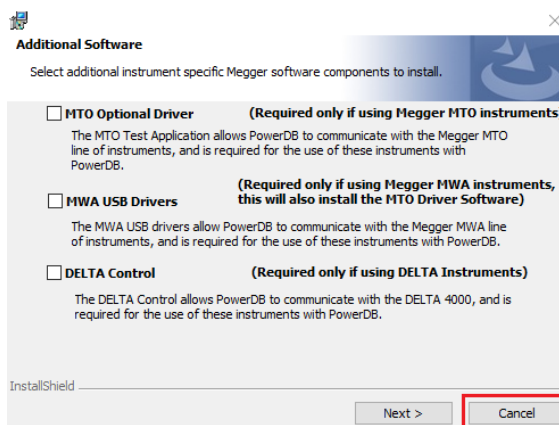


Figure 14.

17. Select “Yes” for the option not to install additional drivers as per Figure 15.

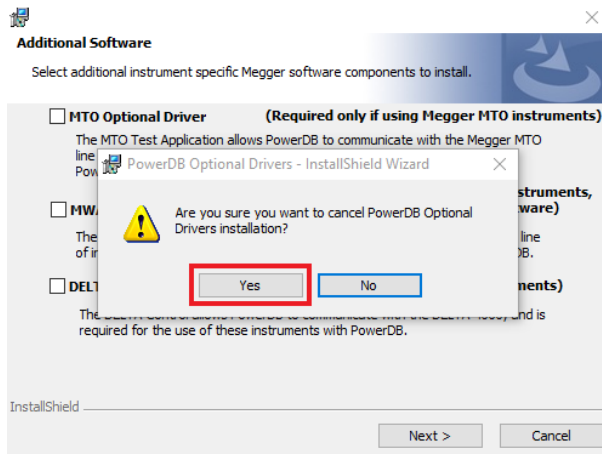


Figure 15.

18. Select “Finish” on the “InstallShield Wizard Completed” window as per Figure 16.

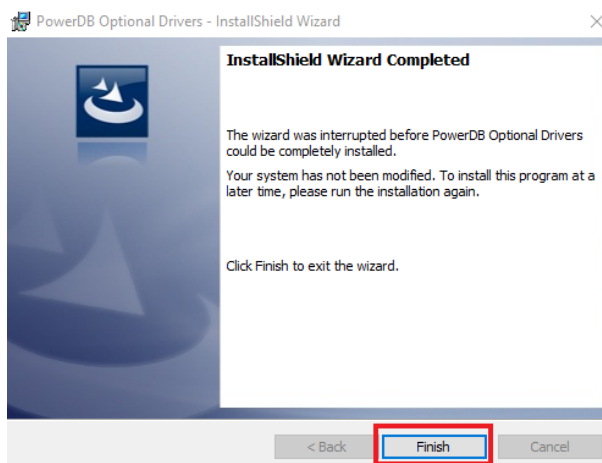


Figure 16.

19. To confirm the PowerDB and FREJA Remote version refer back to “How to check and know the version of Software and Firmware on your FREJA”

### **Instructions for FREJA Firmware update downloaded from the Megger website:**

20. Go to [www.megger.com](http://www.megger.com)
21. **Log In.** (If you have not registered on the Megger website you will have to do so)
22. In the search window, enter the model of FREJA that you have or go to “Products”, “Relay and Protection Testing”, “Multi-phase relay testing”, “Relay Software” and select the model of FREJA that you have.
23. On the FREJA page that you selected go to the “Software” tab.
24. Under the “FREJA” tab there is three Zip files, one containing PowerDB and the latest FREJA Remote Software, one containing the FREJA Local Onboard install and one containing FREJA Firmware, and can be downloaded as per Figure 4 & 17.



OVERVIEW
TECHNICAL
SOFTWARE

FREJA

FREJA Firmware 5.370

FREJA\_Firmware\_5-370.zip

464.6 KB | 15/01/20

Download

install\_powerdb\_11.2\_02DEC19

Released: Dec, 2019  
Note: The downloaded file will be named "Install\_powerdb\_XXX.zip"

install\_powerdb\_11-2\_DRIVER\_UPDATE\_02DEC19.zip

762.5 MB | 15/01/20

Download

Onboard\_Install\_11.2.9.0\_02DEC19SMRT

Released: Dec, 2019  
Note: The downloaded file will be named "Onboard\_Install\_XXX.zip"

Onboard\_Install\_-11-2-9-0\_Driver\_Update\_02DEC19SMRT.zip

492.6 MB | 15/01/20

Download

**Figure 17.**

25. Save the downloaded Zip file containing the latest firmware to your local hard-drive for later installation.
26. Once the Zip file containing the firmware update is saved on your local drive, unzip the folder to a location on your local hard drive for later installation as per Figure 18.



**Figure 18.**

27. With the FREJA Remote Software open on the Home Screen, select the "System Configuration" button as per Figure 19.

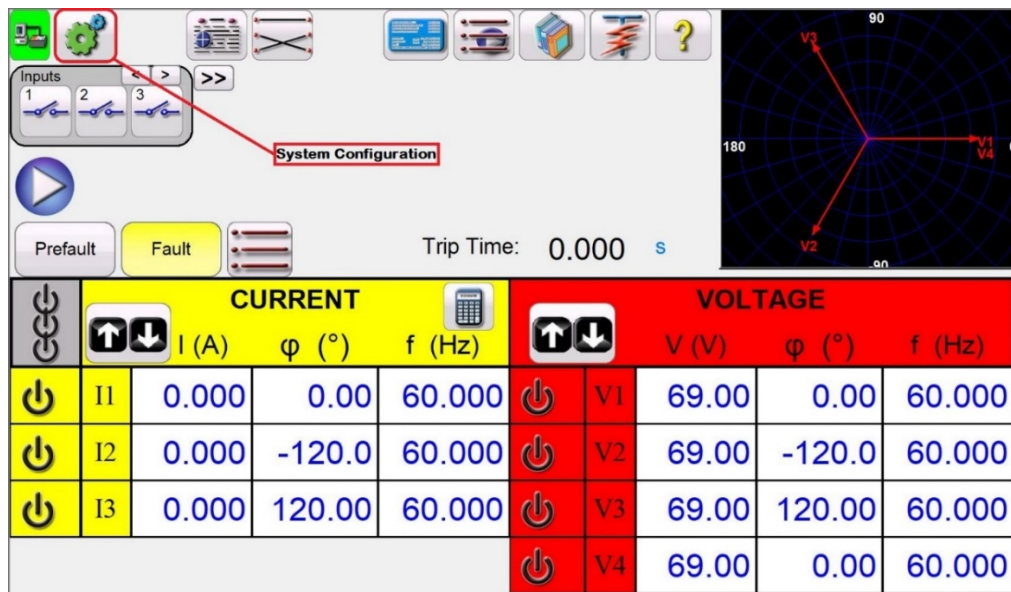


Figure 19.

28. In the “System Configuration” screen, select “Update Firmware” as per Figure 20.

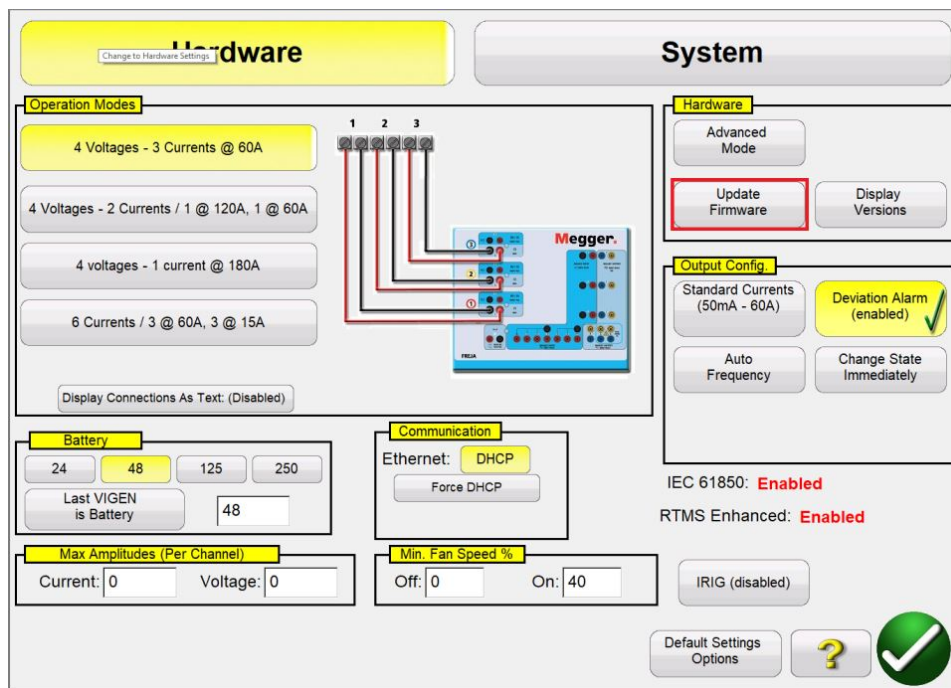
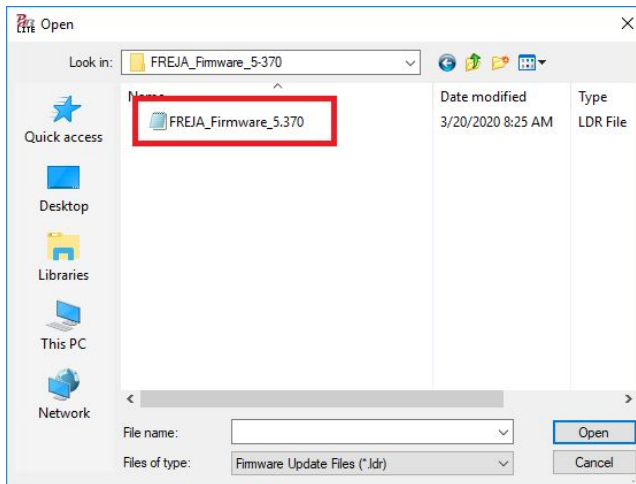


Figure 20.

29. After selecting “Update Firmware” the user should see the following screen as per Figure 21, locate where the downloaded Firmware was saved and open the file containing the Firmware.



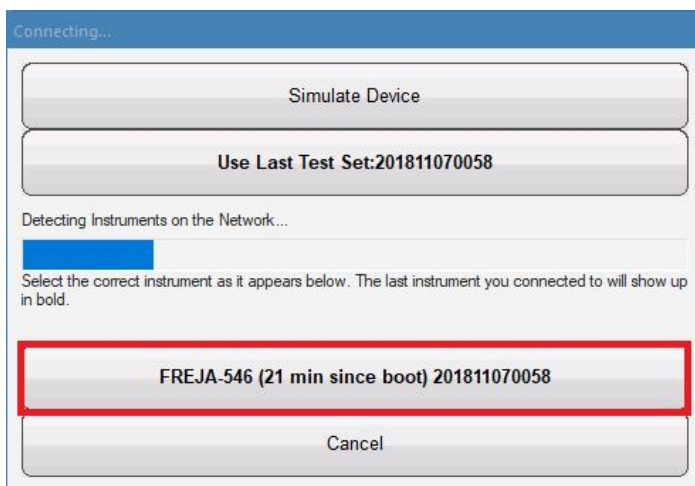
**Figure 21.**

30. The Firmware will be installed on the connected FREJA and on completion of the installation; the user should see the following message as per Figure 22.

**Please Reboot Instrument when clicking..**

**Figure 22.**

31. Power cycle the FREJA and select the connected FREJA once the Serial number of the unit appears in the “connection” window as per Figure 23.



**Figure 23.**

32. To confirm the Firmware version of the connected FREJA refer back to “How to check and know the version of Software and Firmware on your FREJA”.